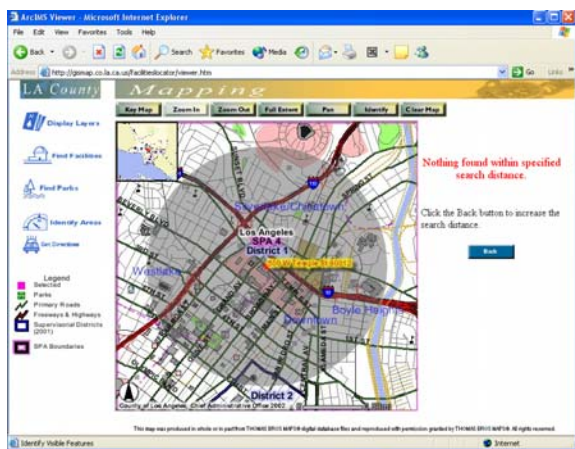
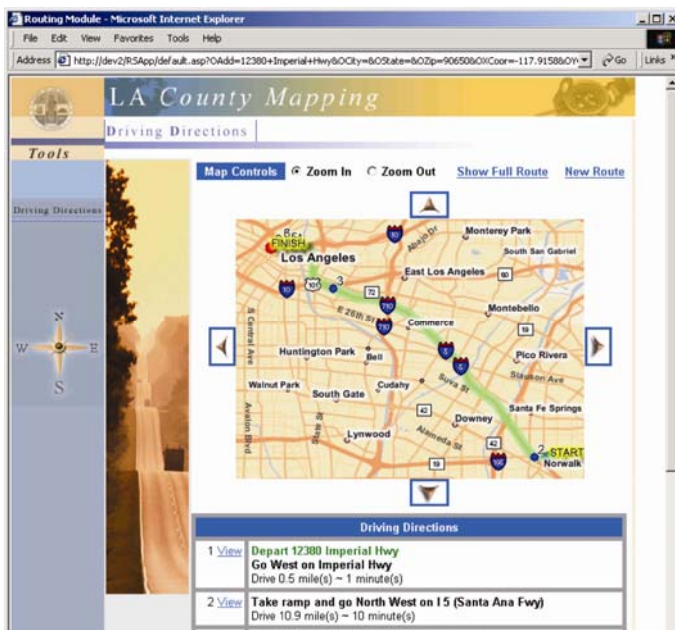


Web Based Facilities Locator

bd Systems' flexible GIS web architecture and application system helps Los Angeles County employees and the public find information about County facilities, including health, parks, recreation, education, entertainment, administration, law enforcement, and other facilities. Site visitors use the application's map- and form-based interface to enter an address and find county facilities within a specified distance. They can then query the application to learn additional information about those facilities, such as the facility name, hours of operation, telephone number, and services or amenities provided, as well as travel directions from their starting location. The facilities locator application lets users define the geographic areas such as Supervisory District boundaries, Service Planning Areas (SPA) boundaries, and cities and unincorporated areas.



The facilities locator matches locations to user queries, then provides additional data about available services and amenities. An optional routing component provides door-to-door instructions to any charted facility.



The bd Systems Advantage

bd Systems can tailor this application to any jurisdiction, city, or county with a need to help employees and the public find facility information. Clients can include only locations directly supported by the local jurisdiction, or expand their offering to include community-based organizations providing services within the geographic area.

To build a facilities locator, bd Systems plots location coordinates against maps supplied commercially or by the jurisdiction. A comprehensive facility information database to draws and displays query results. Reference maps can include zones and boundary layers to help narrow selection criteria. The optional routing component obtains the start points and destination locations from the Internet map, but uses a routable street network.

bd Systems designed, built, and implemented this application using Arc/IMS and its Route Server extension from Environmental Systems Research Institute (ESRI) in Redlands. Access the LA County Facilities Locator application at <http://gismap.co.la.ca.us/facilitieslocator>.

About bd Systems

A subsidiary of Science Applications International Corporation (SAIC), bd Systems is a cutting-edge business concern providing engineering and information technology services for government and private industry. Based in Torrance, California, bd Systems has over 20 operating locations nationwide. For additional information, please contact us. P: 310.618.8798 | F: 310.782.5757 | info@bdsys.com

