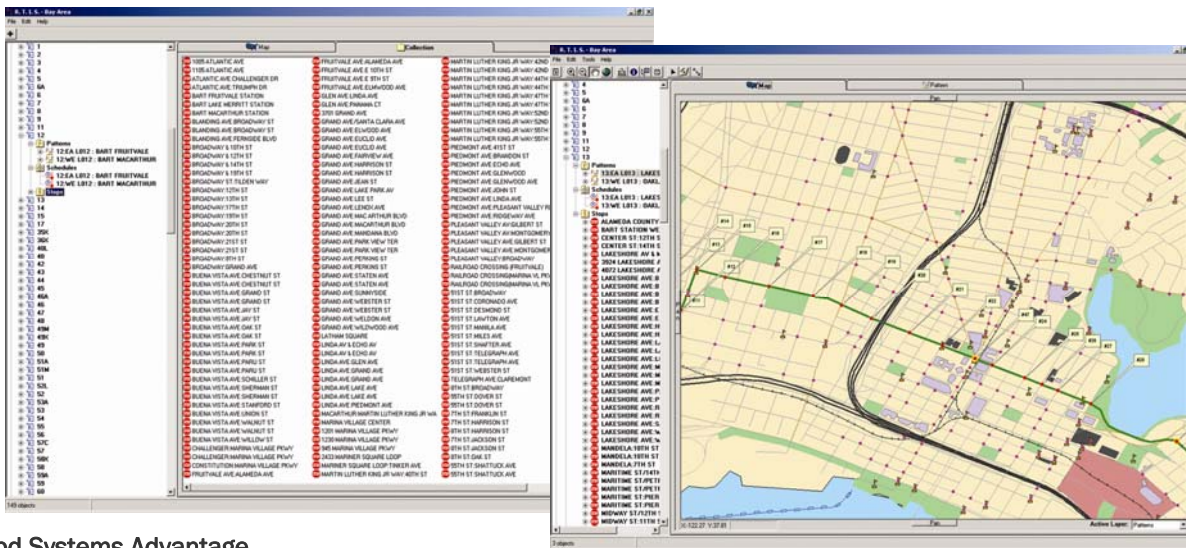


Transit Data Integration & Maintenance

Most transit agencies are faced with the dilemma of synchronizing information across separate applications throughout their agencies. In most cases, data is entered redundantly into each of the required systems, resulting in data error and integrity issues, data maintenance inefficiencies, and non-integrated data islands that cannot be used for agency-wide purposes. bd Systems' suite of customizable transit data integration and maintenance tools that links the various functions and software within a transit agency to a centralized corporate database enabled with GIS technology. GIS adds a powerful ability to provide visual information.



The bd Systems Advantage

Transit Tools reduce data maintenance inefficiencies and non-integrated data islands through a centralized, open architecture corporate database. By pulling data from existing scheduling and other applications, a centralized database allows relevant information to be pushed to systems that require such information. In addition, these easy-to-use data maintenance tools allow for easy updating and maintenance of the majority of transit-related data elements. Key transit agencies functions include:

- Building and managing stop, route/pattern data
- Integrating stops/time points with route/patterns
- Building route/pattern geometry
- Building & integrating schedule & fare information
- Maintaining landmark/known place information
- Visualizing route and schedule information
- Capturing & publishing temporary service disruptions
- Exchanging information with existing systems

Routes, patterns, and stops can be created and maintained through graphical interfaces.

bd Systems' Transit Tools work independently of other systems and can be integrated with other software packages and major scheduling systems such as Trapeze or Hastus. They allow an agency to view and edit transit stops, routes, patterns, landmarks, fares, schedules, and trip information in a central relational database, all with powerful graphical GIS capabilities. The resulting data is available to support a myriad of internal needs as well as transit information web applications. This centralized data maintenance approach reduces data duplication and error, and facilitates the ability to share information across planning, operations, and maintenance divisions.

About bd Systems

A subsidiary of Science Applications International Corporation (SAIC), bd Systems is a cutting-edge business concern providing engineering and information technology services for government and private industry. Based in Torrance, California, bd Systems has over 20 operating locations nationwide. For additional information, please contact us. P: 310.618.8798 | F: 310.782.5757 | info@bdsys.com

